

YEAR

2013

LINK WYNDHAM ST (from QUEEN'S RD C to LOWER ALBERT RD)

COVERAGE (B) STATION

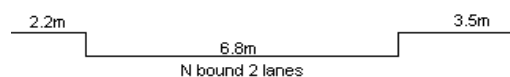
2210

ROAD NETWORK

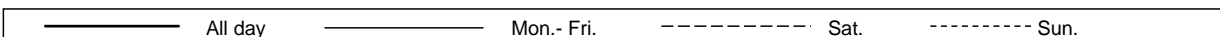
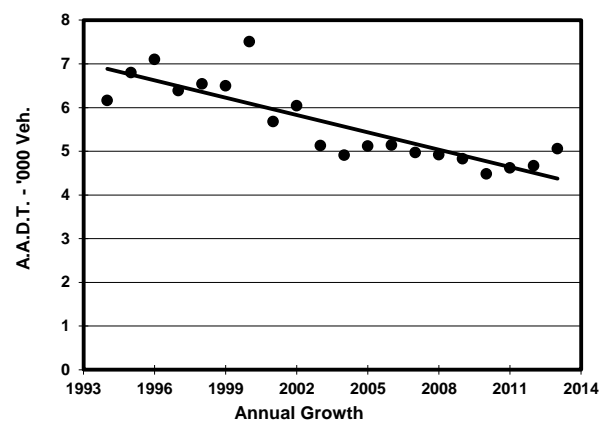
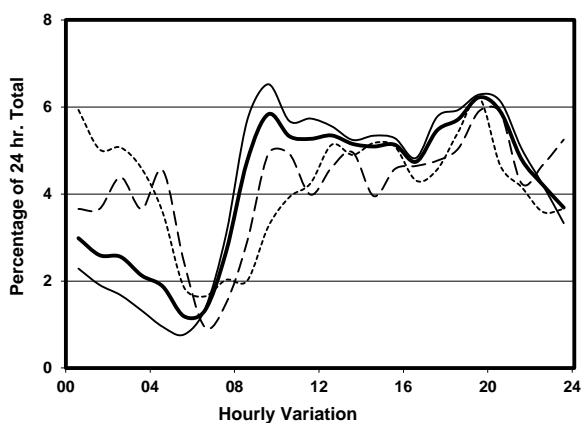
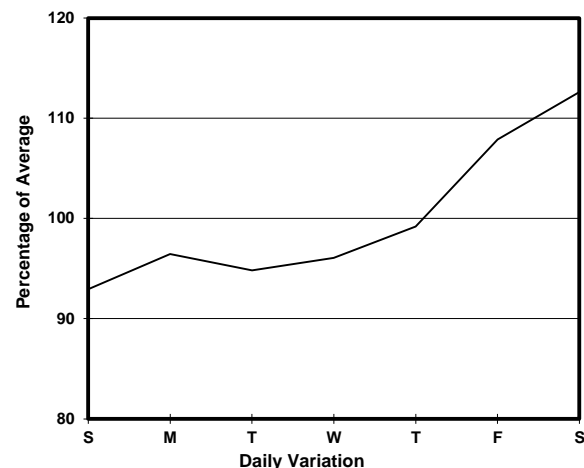
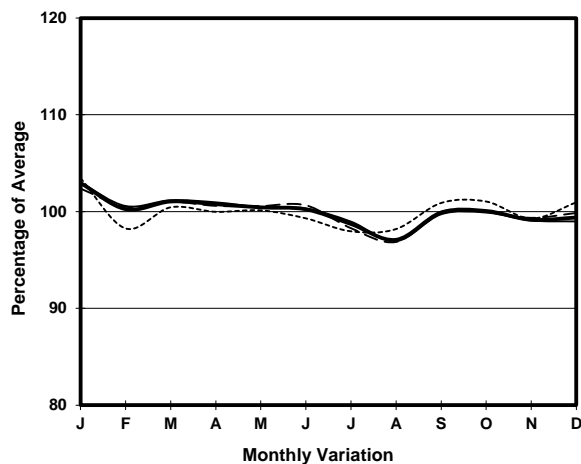
MAJOR

ROAD TYPE

DISTRICT DISTRIBUTOR



## 1. TRAFFIC FLOW VARIATION AND GROWTH



## 2. TRAFFIC CHARACTERISTICS (BY DIRECTION)

## Parameter

## NORTH BOUND

A.A.D.T.

R 12 / 24 - %

R 16 / 24 - %

AM Peak Hour

One-way flow at AM peak hour

T - % (AM)

PM Peak Hour

One-way flow at PM peak hour

T - % (PM)

Prop.of commercial vehicles - 16 hr.

All - Day

Mon. - Fri.

Sat.

Sun.

5060

5010

5710

4720

60.5

64.7

50.8

50.1

81.6

86.3

71.5

68.7

0900-1000

0900-1000

0900-1000

0900-1000

300

330

280

150

-

4.4

-

-

1800-1900

1800-1900

1800-1900

1800-1900

290

300

290

260

-

-

-

-

-

1

-

-

A.A.D.T.

R 12 / 24 - %

R 16 / 24 - %

AM Peak Hour

One-way flow at AM peak hour

T - % (AM)

PM Peak Hour

One-way flow at PM peak hour

T - % (PM)

Prop.of commercial vehicles - 16 hr.

-

-

-

-

-

-

-

-

-

-

-

-

-

-

-

-

-

-

-

-

-

-

-

-

-

-

-

-

-

-

-

-

-

-

-

-

-

-

-

-

## 3. OTHER INFORMATION AND COMMENT

**4. Vehicle classification and occupancy - Monday to Friday**

Time		Class of vehicle									
		Motor Cycle	Private Car	Taxi	Private LB	PLB	Goods veh.		Non Fr. Bus	Fr. Bus	
							Light	M & H		SD	DD
0700-0800	Pro	0.0	25.6	46.2	2.6	0.0	25.6	0.0	0.0	0.0	0.0
	Ocp	0.0	1.5	1.8	2.0	0.0	1.2	0.0	0.0	0.0	0.0
0800-0900	Pro	0.0	43.1	45.1	0.0	0.0	9.8	2.0	0.0	0.0	0.0
	Ocp	0.0	1.4	1.8	0.0	0.0	1.2	1.0	0.0	0.0	0.0
0900-1000 Peak hour	Pro	1.1	56.5	21.7	0.0	0.0	16.3	3.3	1.1	0.0	0.0
	Ocp	1.0	1.6	1.9	0.0	0.0	1.5	1.3	10.0	0.0	0.0
1000-1100	Pro	2.8	45.1	32.4	2.8	0.0	16.9	0.0	0.0	0.0	0.0
	Ocp	1.0	1.9	2.0	5.0	0.0	1.5	0.0	0.0	0.0	0.0
1100-1200	Pro	0.0	44.3	32.8	0.0	0.0	18.0	3.3	1.6	0.0	0.0
	Ocp	0.0	1.3	1.6	0.0	0.0	1.6	1.5	1.0	0.0	0.0
1200-1300	Pro	1.9	39.6	39.6	0.0	0.0	17.0	1.9	0.0	0.0	0.0
	Ocp	2.0	1.9	1.9	0.0	0.0	1.4	1.0	0.0	0.0	0.0
1300-1400	Pro	1.4	54.2	26.4	0.0	0.0	18.1	0.0	0.0	0.0	0.0
	Ocp	1.0	1.5	1.6	0.0	0.0	1.7	0.0	0.0	0.0	0.0
1400-1500	Pro	1.5	55.4	26.2	0.0	0.0	16.9	0.0	0.0	0.0	0.0
	Ocp	1.0	1.4	1.9	0.0	0.0	1.5	0.0	0.0	0.0	0.0
1500-1600	Pro	0.0	55.4	28.4	0.0	0.0	16.2	0.0	0.0	0.0	0.0
	Ocp	0.0	1.5	2.1	0.0	0.0	1.4	0.0	0.0	0.0	0.0
1600-1700	Pro	3.9	53.2	28.6	0.0	0.0	14.3	0.0	0.0	0.0	0.0
	Ocp	1.0	1.6	1.8	0.0	0.0	1.7	0.0	0.0	0.0	0.0
1700-1800	Pro	4.3	52.9	35.7	0.0	0.0	7.1	0.0	0.0	0.0	0.0
	Ocp	1.0	1.5	1.8	0.0	0.0	1.6	0.0	0.0	0.0	0.0
1800-1900	Pro	4.1	45.9	40.5	0.0	0.0	9.5	0.0	0.0	0.0	0.0
	Ocp	1.0	1.6	1.7	0.0	0.0	1.7	0.0	0.0	0.0	0.0
1900-2000	Pro	3.9	35.1	54.5	0.0	0.0	5.2	0.0	1.3	0.0	0.0
	Ocp	1.7	1.6	1.9	0.0	0.0	1.8	0.0	5.0	0.0	0.0
2000-2100	Pro	4.2	22.5	70.4	0.0	0.0	2.8	0.0	0.0	0.0	0.0
	Ocp	1.0	1.6	1.5	0.0	0.0	1.5	0.0	0.0	0.0	0.0
2100-2200	Pro	1.7	23.3	73.3	0.0	0.0	1.7	0.0	0.0	0.0	0.0
	Ocp	1.0	1.5	1.5	0.0	0.0	1.0	0.0	0.0	0.0	0.0
2200-2300	Pro	3.0	37.3	59.7	0.0	0.0	0.0	0.0	0.0	0.0	0.0
	Ocp	1.0	1.5	2.1	0.0	0.0	0.0	0.0	0.0	0.0	0.0
16 hours	Pro	2.2	44.1	40.5	0.3	0.0	11.9	0.7	0.3	0.0	0.0
	Ocp	1.1	1.6	1.8	4.0	0.0	1.5	1.3	5.3	0.0	0.0

**Legend**

**Pro.** Proportion of vehicles in % (Sum may not add up to 100% due to figure rounding)  
**Ocp.** Average occupancy of vehicles  
**M&H** Medium and Heavy